

RISER DIAGRAM

PANEL SCHEDULE

20	MAKE-UP AIR UNIT	1	2	208V OUTDOOR	80
20	208V EAST RECEPTACLES	3	4	RECEP 140 A	
20	HTER #4	9	10	208V WEST RECEPTACLES	20
20	DOOR OPERTRSL	12		208V SOUTH LIGHTS	50
20	S.W. RECEPTS	11	16	HTR #1	20
20	OVRHD REC	19	20	HTR #2	20
20	20A WTR HTR	21	22	HTR #3	20
20	RM#2 HTR	23	24	OUTDR LIGHTS	20
20	GUARD HSE	25	26	NORTH LIGHTS	20
20	OVRHD REC	21	28	N.E. RECEPTS	20
20	CLG FANS	29	30	W. RECEPTS	20
	BLANKS	31	32	R.R. FAN	20
		33	34	RM#3 HTR	20
		35	36	BLANKS	20
		37	38		
		39	40		

NOTES

- 1) ALL CONDUIT SHALL BE EMT UON
 - 2) ALL WIRES SHALL BE THHN UON.
 - 3) ALL CONDUIT SHALL CONTAIN A PROPERLY SIZED GROUND CONDUCTOR
 - 4) FIRE ALARM DESIGNER AND SUBMITTED TO THE STATE SEPARATELY
 - 5) GAS/SHED TO BE PRE-MANUFACTURED UNIT WITH STATE STAMP TO STATE
- Ø BUILDING NOT TO HOUSE CLASS I LIQUIDS OR TO BE USED AS AN AUTO REPAIR GARAGE.

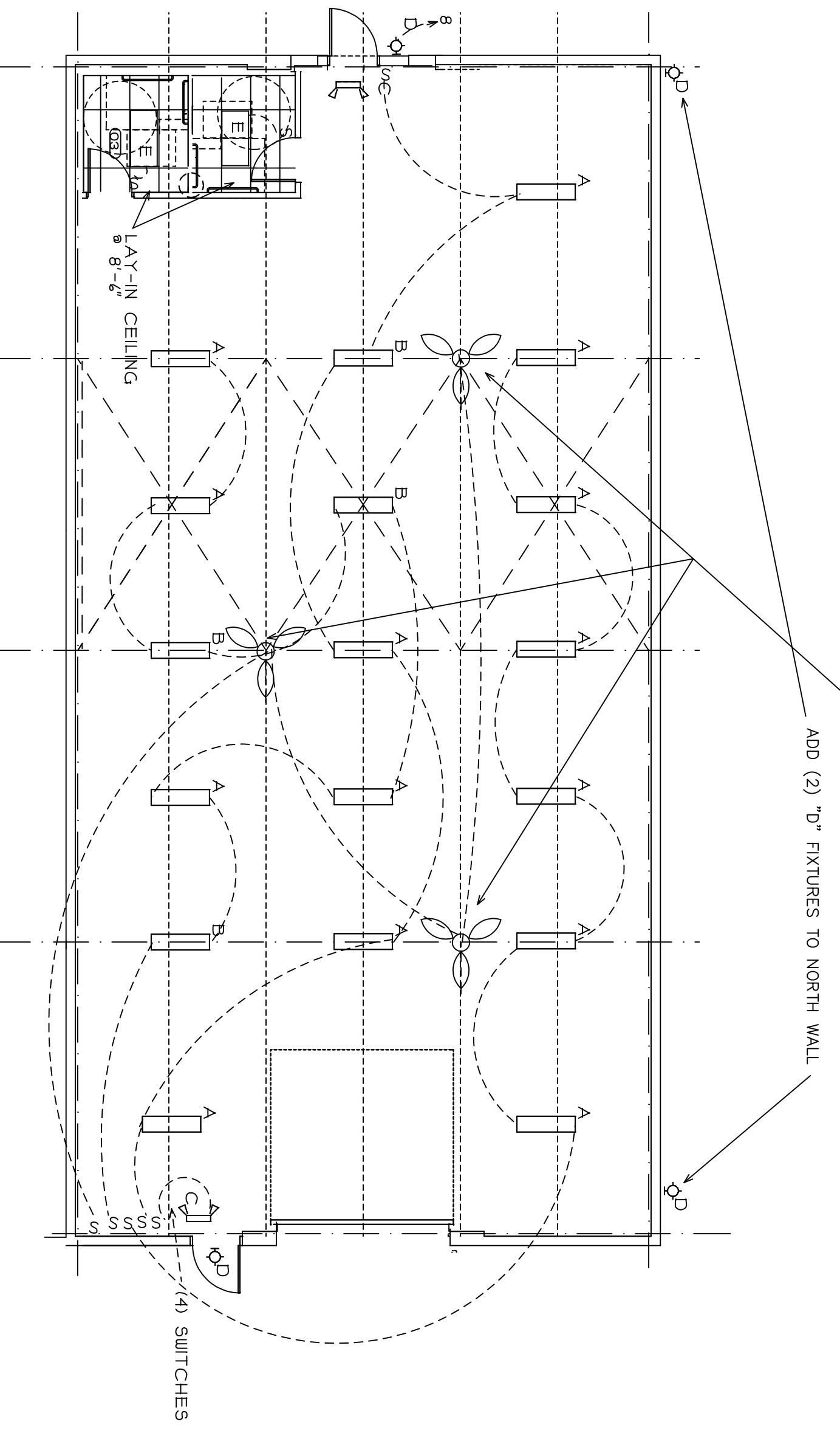
ELECTRIC LOAD CALCULATION

RECEPTACLE LOADS = 14,400 VA
 1 50A 208V = 9600 VA
 3 20A 208V = 1440 VA
 1 80A 208V = 1440 VA

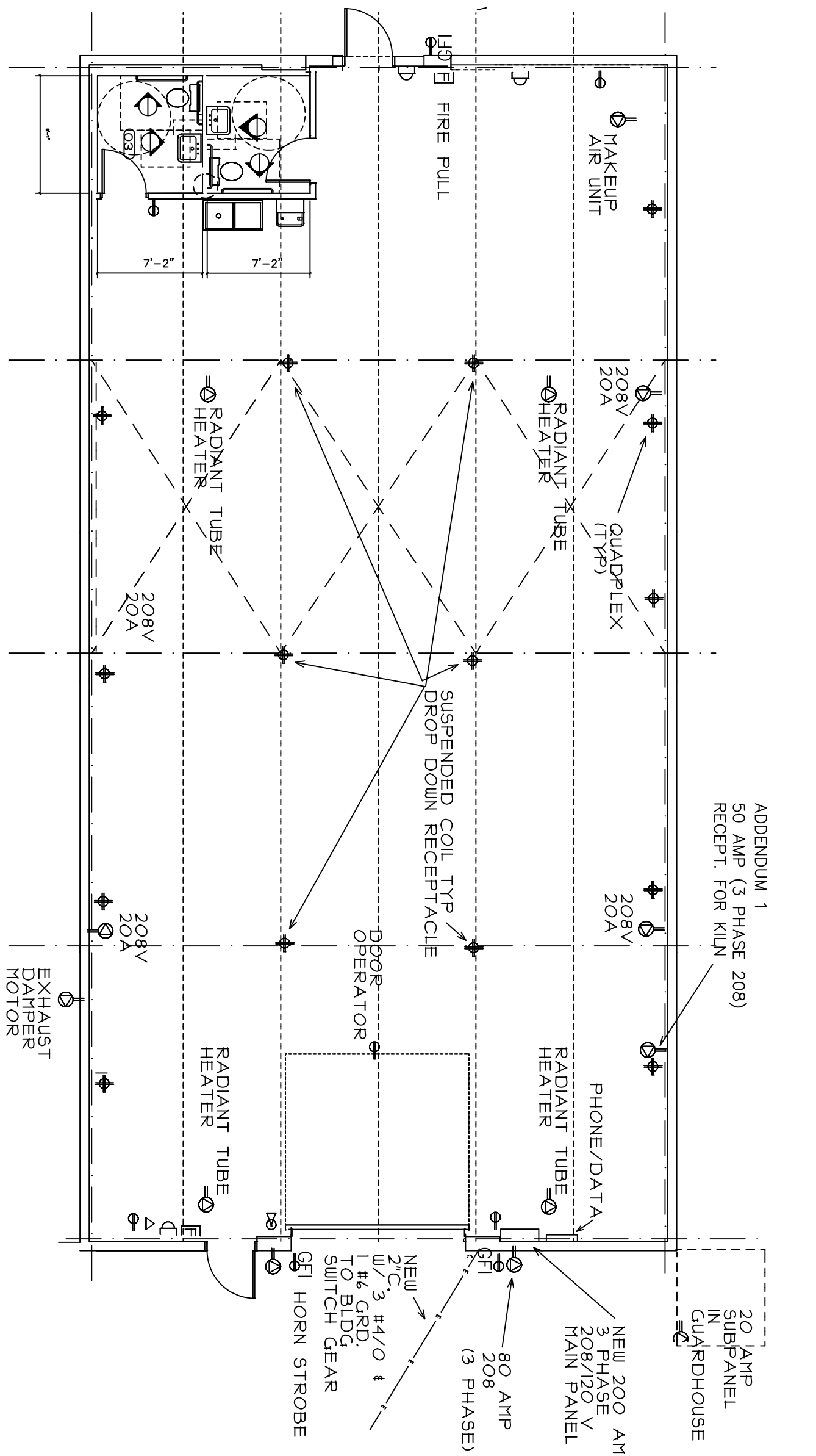
LIGHTING = 3340 VA
 WTR HTR = 2000 VA
 EXHTR FANS = 200 VA
 MAKE-UP AIR UNIT = 1400 VA
 SIG FANS = 300 VA
 TOTAL = 58,980 VA

LIGHTING SCHEDULE

TYPE	DESCRIPTION
A	(4) TUBE T8 HIGHBAY LITHONIA I.B.Z OR EQUAL
B	(4) TUBE T8 HIGHBAY BATTERY OR EQUAL
C	EXIT SIGN W/ HIGH OUTPUT EMERGENCY LIGHTS
D	WALL PACK 1000LM MH LITHONIA TUBROOM OR EQUAL
E	2 TUBE T8 LAY-IN LITHONIA OR EQUAL



LIGHTING PLAN 2
 1/8"=1'-0"



POWER/FLOOR PLAN 1
 1/8"=1'-0"

REVISIONS

NO.	DESCRIPTION	BY

Sunstructures Architects
 5750 Prospect Hill, Grass Lake, MI 49240 (734)994-5650

Electrical Plans

DETROIT COMMUNITY HIGH SCHOOL
 Bagley Quad Shop Renovation
 12615 BURT ROAD, DETROIT, MI

DRAWN : WJA/WJA
 CHECKED : WJA
 DATE : 1/11/2014
 SCALE : 1/8" = 1'
 JOB NO. : 1401

SHEET

4

STATE PROJECT NO. 111008-WA-NE

Bagley plan March 2014
 5/26/2014